

ASPEN Condense Through Kerb



ASPEN Stainless hardworking stainless steel products for hardwearing environments:
British engineered and sealed with a lifetime guarantee.

Product Description

The Standard Condense Through Kerb is designed to remove the risk of damaging the drainage pipe by embedding it within an Aspen Kerb. This creates clean lines, which improves hygiene and moves it off the floor away from daily traffic and collisions.

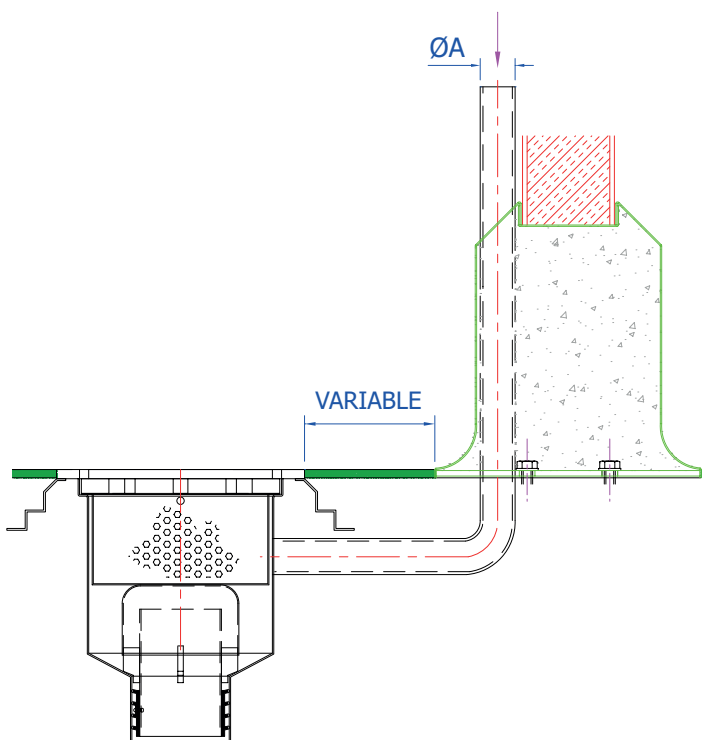
Suitable to use with the KB or KC Aspen Kerb range.

The Condense Through Kerb is available in 3 pipe diameters.

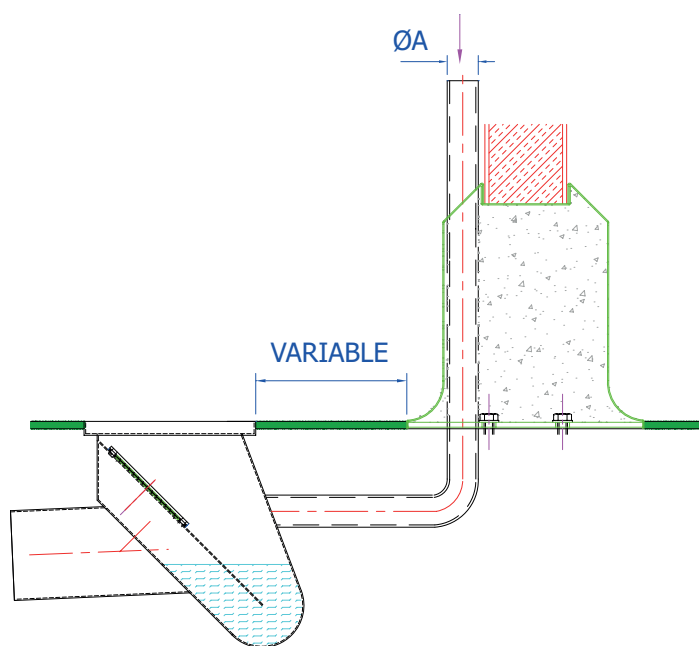
Technical Specification

- > Pipe diameter available in 38, 42 & 50mm
- > Grade 304 stainless steel (British Standard 304S31, Euronorm 1.4301)

MODEL	REF	DIMENSIONS
		A
CONDENSE THROUGH KERB	CON	38 / 42 / 50



SUMMIT GULLY



DELTA GULLY

All dimensions in mm.



ASPEN Condense Through Kerb



ASPEN Stainless hardworking stainless steel products for hardwearing environments: British engineered and sealed with a lifetime guarantee.

ASPEN Drainage System

As the UK based designer and manufacturer of all ASPEN Stainless, Canal Engineering is able to offer a full range of products to complete your drainage system and can customize any of its Units or manufacture complete bespoke drainage systems.

Maintenance

Stainless steel equipment should be occasionally thoroughly checked for retained deposits and concentrated fluid build up that causes corrosion.

Cleaning

Many factors affect the choice of cleaning method and frequency of its application. Suitable methods for stainless steel are: water and steam; mechanical non abrasive scrubbing; organic solvents and mild detergents.

ASPEN Drainage Installation

Canal Engineering offer supply only or full installation, with fully welded and polished joints, and commissioning. Canal Engineering also offer on-going annual inspection and maintenance contracts.

For advice regarding the most suitable ASPEN Stainless for you please contact our technical sales team today to discuss your requirements.

ASPEN Drainage Options

> Available in grade 316 stainless steel (British Standard 316S31, Euronorm 1.4401).



Condense Through Kerb with Gully. Above: Sink also embedded through kerb for maximum protection & hygiene.

