

ASPEN Stainless hardworking stainless steel products for hardwearing environments: British engineered with a lifetime guarantee.

## Product Description

The standard KC4 External Double Sided Wall Kerb is used against outside walls to provide an external drip edge and a thermal break to prevent condensation. The KB4 is designed to support the hygienic wall panel above the finish floor level to reduce the ingress of liquids and offer some protection to factory traffic. It also provides a hygienic interface between floor and wall.

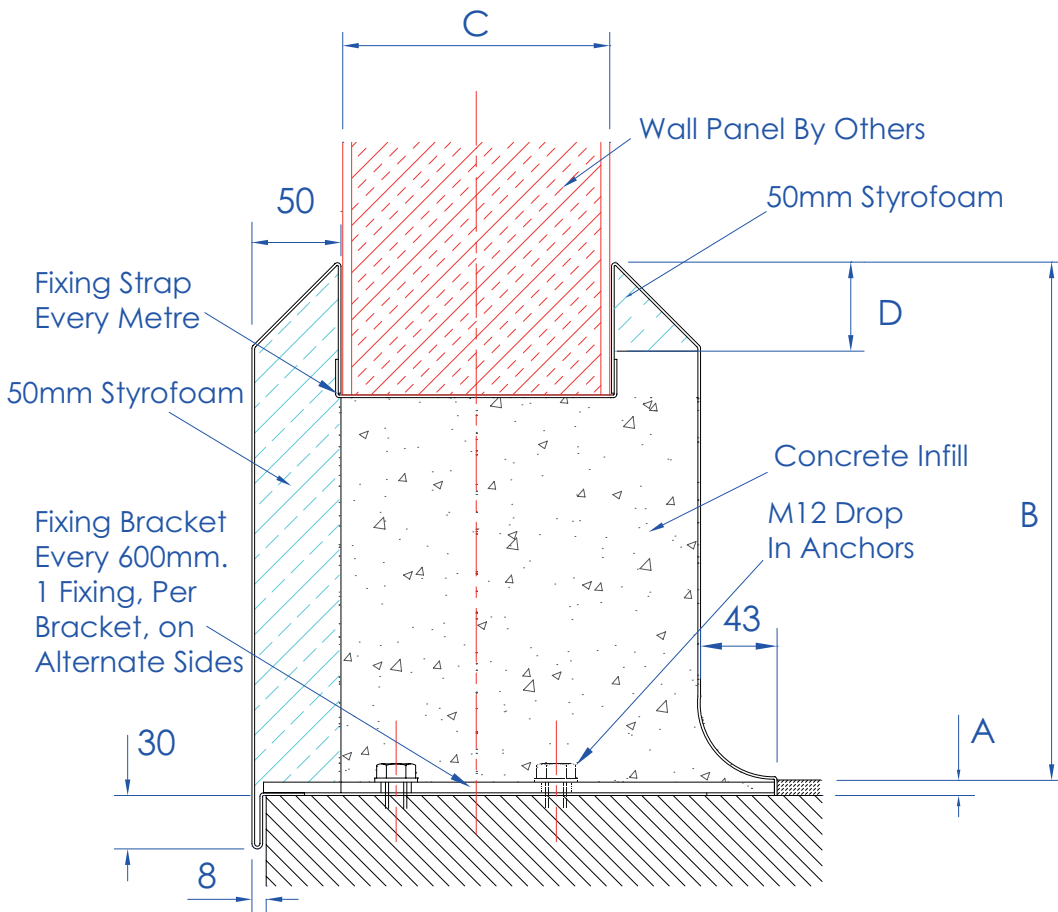
Suitable for use with a Uragard 6-9 mm resin finish.

Size C is custom to each project according to its requirements. The profile of the kerb is dependent on wall thickness.

## Technical Specification

- > 2mm 240 grit stainless steel.
- > 50mm Styrofoam to prevent frost creeping from outside of the building into the kerb.
- > C30 concrete infill.
- > Resin anchor fixings.
- > Available in grade 316 stainless steel (British Standard 316S31, Euronorm 1.4401).

MODEL	REF	KERB DIMENSIONS			
		A	B	C	D
DOUBLE EXTERNAL	KC4	9	290 NOMINAL	VARIABLE	50



All dimensions in mm.



# ASPEN KC4 Wall Kerb | External Double Sided



ASPEN Stainless hardworking stainless steel products for hardwearing environments: British engineered with a lifetime guarantee.

## ASPEN Kerbing System

As the UK based designer and manufacturer of all ASPEN Stainless, Canal Engineering is able to offer a full range of products to complete your kerbing system and can customize any of its Units or manufacture complete bespoke kerbing systems.

### Key Benefits

This profile is ideal for installing with a Uragard resin floor. The kerb should be installed on the base slab. The Kerb is fully welded and made to suit sliding, personnel, roller doors, corners, tees and wall ends.

### Maintenance

Stainless steel equipment should be occasionally thoroughly checked for retained deposits and concentrated fluid build up that causes corrosion.

### Cleaning

Many factors affect the choice of cleaning method and frequency of its application. Suitable methods for stainless steel are: water and steam; mechanical non abrasive scrubbing; organic solvents and mild detergents.



KC4 Kerb Sample

## ASPEN Kerbing Installation

Canal Engineering offer supply only or full installation, with fully welded and polished joints, and commissioning. Canal Engineering also offer on-going annual inspection and maintenance contracts.

For advice regarding the most suitable ASPEN Stainless for you please contact our technical sales team today to discuss your requirements.

## ASPEN Kerbing Options

> A range of Uragard resin flooring can be recommended.