

# ASPEN Resin Filled Drain Cover

Load Class up to FACTA A15



ASPEN Stainless hardworking stainless steel products for hardwearing environments: British engineered with a lifetime guarantee.

## Product Description

The standard Resin Filled Tray Drain Cover is manufactured in 996mm standard lengths or suitable for the drainage system design. The Cover can incorporate the colour, finish and functionality of the surrounding floor surface providing maximum anti slip surface.

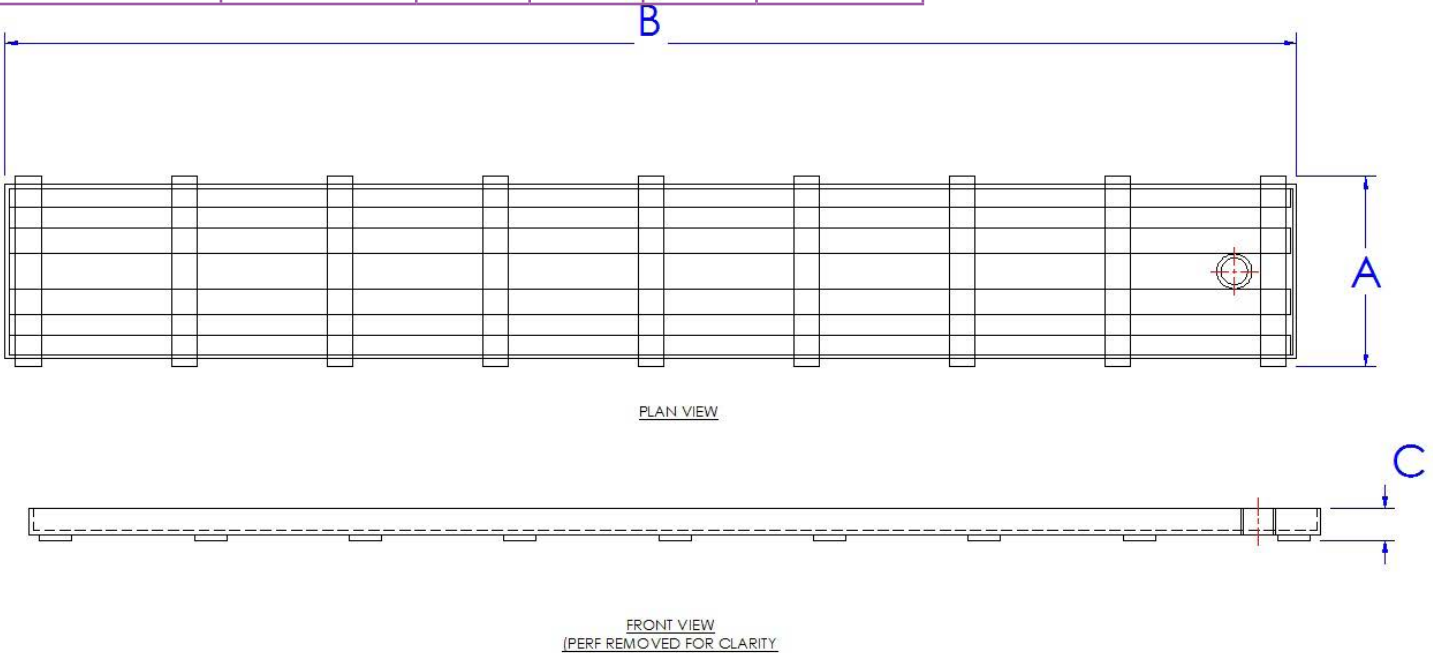
Suitable for hygienic environments accessed by pedestrian factory traffic.

The Cover is available in two standard sizes.

## Technical Specification

- > Support: 20mm x 5mm stainless steel flat.
- > Tray: 3mm stainless steel.
- > Resin Grip.
- > 25mm depth to fit either Drain Channel.
- > Stitch welded.
- > Grade 304 stainless steel (British Standard 304S31, Euronorm 1.4301).
- > Low Slip Potential according to UKSRG in dry & wet conditions.

MODEL	REF	COVER DIMENSIONS			FACTA LOAD CLASS
		A	B	C	
RESIN 100	CC100RES	146	996	25	
RESIN 170	CC170RES	216	996	25	



The blue measurements indicate the variable dimensions shown in the chart above. All dimensions in mm.



# ASPEN Resin Filled Drain Cover

Load Class up to FACTA A15



ASPEN Stainless hardworking stainless steel products for hardwearing environments: British engineered with a lifetime guarantee.

## ASPEN Drainage System

As the UK based designer and manufacturer of all ASPEN Stainless, Canal Engineering is able to offer a full range of products to complete your drainage system and can customize any of its Units or manufacture complete bespoke drainage systems.

### Key Benefits

This style of drain cover provides maximum liquid drainage to the channel and provides a robust surface to withstand pedestrian factory traffic on a daily basis. The Cover can incorporate the colour, finish, and functionality of the surrounding floor surface providing maximum anti-slip surface for foot traffic.

### Maintenance

Stainless steel equipment should be occasionally thoroughly checked for retained deposits and concentrated fluid build up that causes corrosion.

### Cleaning

Many factors affect the choice of cleaning method and frequency of its application. Suitable methods for stainless steel are: water and steam; mechanical non abrasive scrubbing; organic solvents and mild detergents.

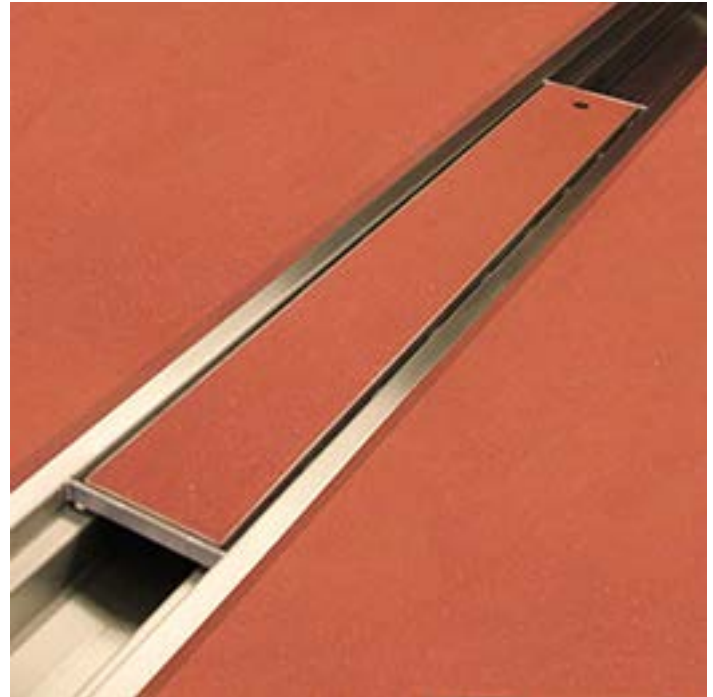
## ASPEN Drainage Installation

Canal Engineering offer supply only or full installation, with fully welded and polished joints, and commissioning. Canal Engineering also offer on-going annual inspection and maintenance contracts.

For advice regarding the most suitable ASPEN Stainless for you please contact our technical sales team today to discuss your requirements.

## ASPEN Slip Resistance

Classification of slip potential surfaces in wet and dry conditions are according to 'The Assessment of Floor Slip Resistance: The UK Slip Resistance Group (UKSRG) Guidelines issues 4 / 2011'. Results are obtained from tests carried out by our trained laboratory technicians in the internal laboraboraty. All figures are measured and expressed under laboratory conditions: Actual performance may vary from the above values depending upon site conditions. Contact the Technical Sales team for the actual slip resistant values or more information about the UKSRG.



Resin Filled Drain Cover Sample

## ASPEN Drainage Options

- > Available in grade 316 stainless steel (British Standard 316S31, Euronorm 1.4401).
- > Cover can be bolted to the Channel to prevent distortion during overloading situations.
- > A choice of different colours to match existing floor scheme.